

RUISSÉAU



BUILDING B

Elegant 3 Bedrooms | 3 Full Baths & 2 Half Baths | Study & Loft

First Floor Owner's Suite with Luxurious Bath and Walk-in Shower with Bench Seat

Gourmet Island Kitchen Opens to Dining and Great Room

Second Floor Features Loft, Secondary Bedrooms, Storage, and Outdoor Covered Patio

TOWNHOME 13

2,589 Square Feet

405 Nettle Court, Woodstock, GA 30188

\$675,804

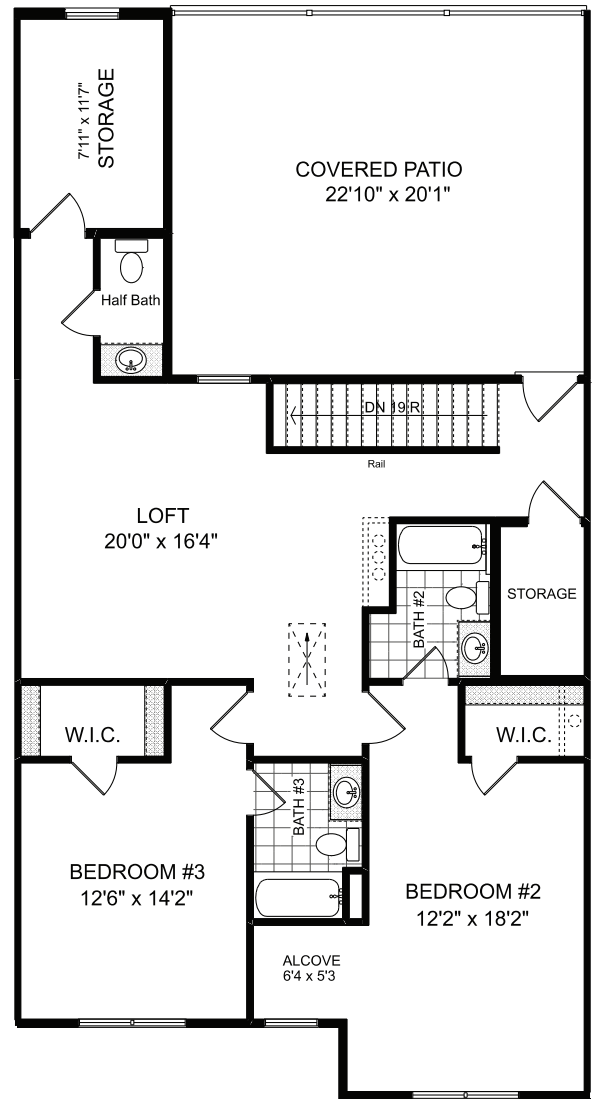
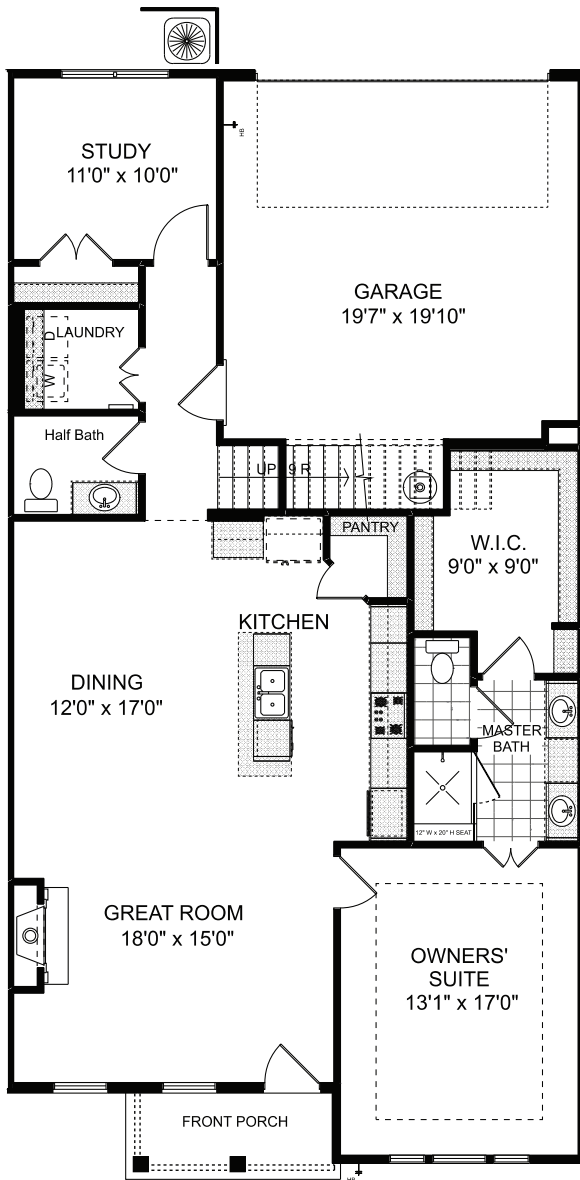
LUXURY TOWNHOMES FROM THE \$600s

312 Thistle Court | Woodstock, GA 30188 | 770.516.3678 | windsonglife.com

All illustrations, specifications, pricing and details are believed correct at the time of publication. This brochure is for illustrative purposes only and not part of a legal contract. Information subject to changes, errors and omissions. © 2025 Windsong

3.21.25

RUISSÉAU



LUXURY TOWNHOMES FROM THE \$600s

312 Thistle Court | Woodstock, GA 30188 | 770.516.3678 | windsonglife.com

All illustrations, specifications, pricing and details are believed correct at the time of publication. This brochure is for illustrative purposes only and not part of a legal contract. Information subject to changes, errors and omissions. © 2025 Windsong

3.21.25

