

ASHBURY *Commons*



THE WESLEYAN

4 Bedrooms | 3.5 Bathrooms | 3-Car Garage | 3,132+ Square Feet

Homesite 6

723 Crest Line Trail, Powder Springs GA 30127

Estimated Move-In Ready: Aug

\$755,153



FEATURES:

Great Room with Fireplace Opens to Dining, Kitchen and Screened Porch & Extended Patio

Gourmet Island Kitchen with Walk-in Pantry and Family Entry From 3-Car Garage

Open Two-Story Foyer and Private First Floor Study with Coat Closet and Half Bath

Gracious Second Floor Primary Suite Features a Luxurious Bathroom and Walk-in Closet

Three Large Secondary Bedrooms and Two Bathrooms Complete the Second Floor

This is the life you've been dreaming of

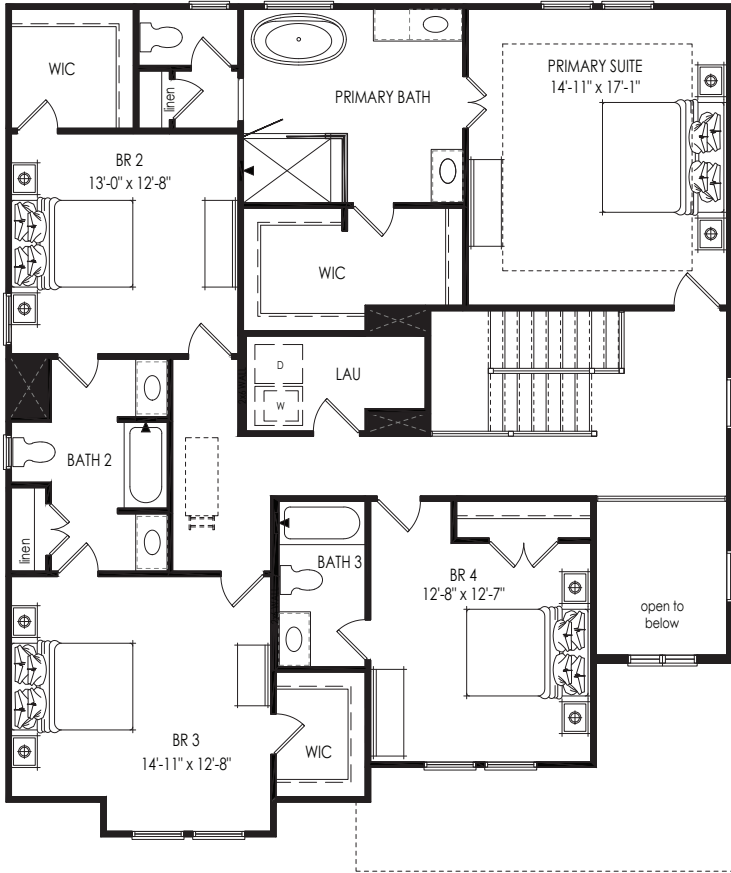
SIGNATURE HOMES FROM THE HIGH \$600S

739 Crest Line Trail | Powder Springs, GA 30127 | 678.355.8736 | windsonglife.com

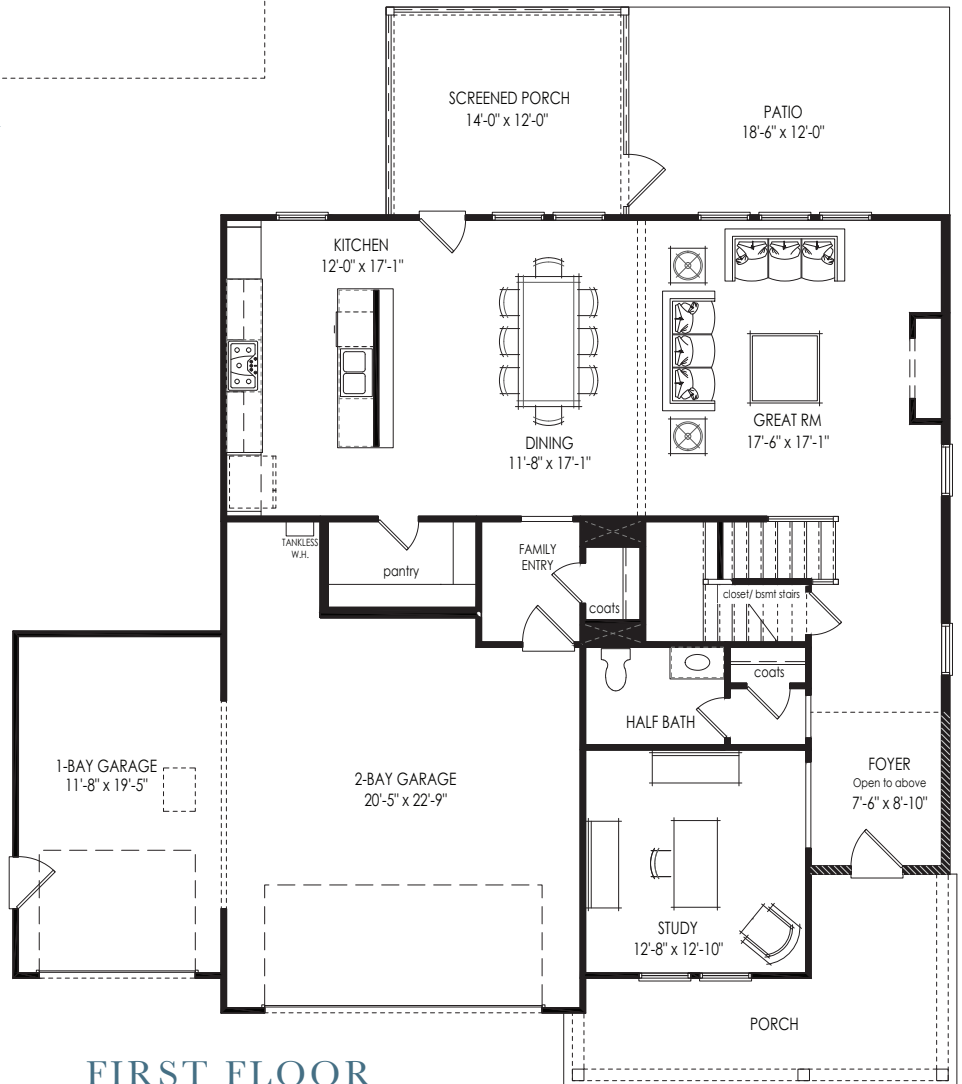
All illustrations, specifications, pricing and details are believed correct at the time of publication. This brochure is for illustrative purposes only and not part of a legal contract. Information subject to changes, errors and omissions. © 2025 Windsong

4.22.25





SECOND FLOOR



FIRST FLOOR